

RESUME

In order to determine the extent of the spread of intestinal infectious agents, more than 430 animals were examined (110 cattle, 120 sheep, 50 pigs, 50 horses, 100 domestic animals) in the farms of Almaty and Zhambyl regions. Intestinal pathogens are found in flushes from equipment, hands of workers and feed.

The detection of intestinal pathogens in food products, on the hands of workers - is a direct indication for the organization and conduct of targeted comprehensive measures to curb the pathways of transmission of the pathogen both at sites and in livestock breeding complexes - the suppliers of products.

619:616.1:636.39

- 1 . . 1,
 - 2 . . 2,
 - 3 . . 1,
 - 4 . . 3,
- 1 -
- 2 -
- 3 - (, , ,),

[1].



[2].

[3].

[4].

(1-3).

34⁰

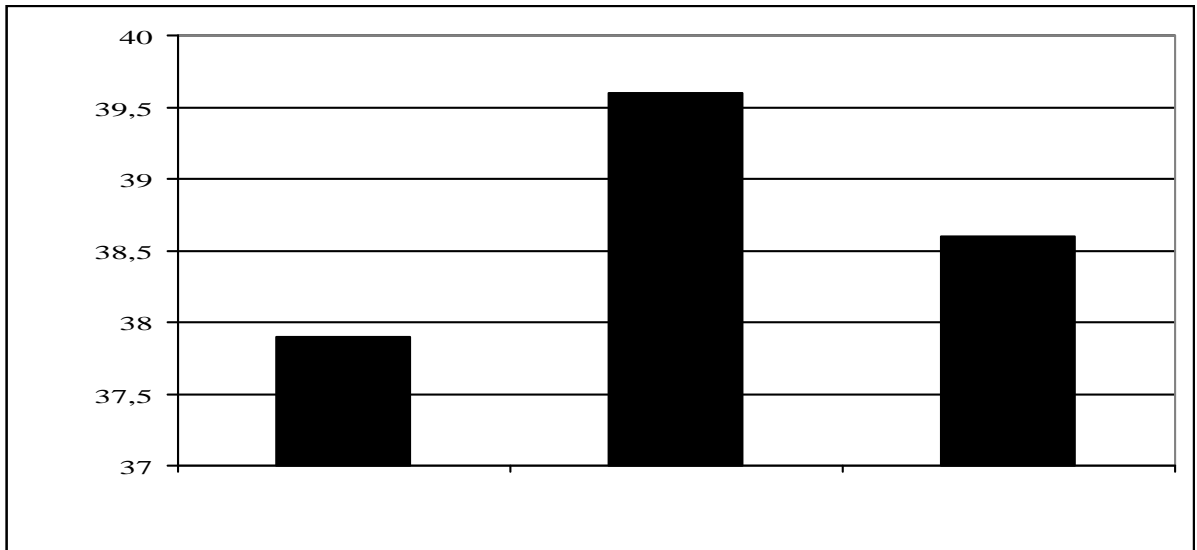
42⁰

0,1⁰

5

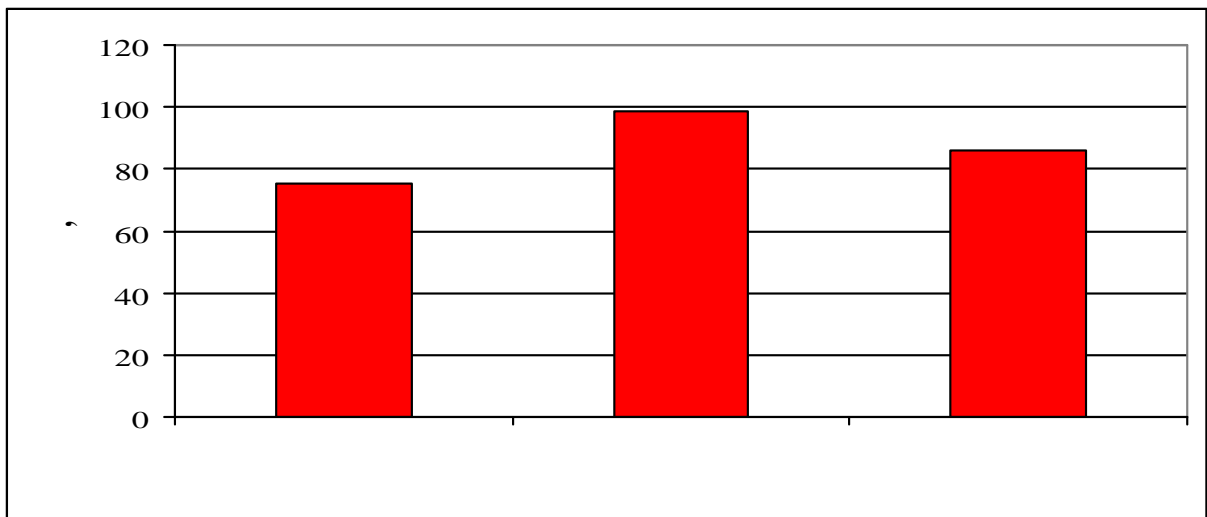
(1)

37,9±0,63⁰



1 -

) 39,6±0,27⁰ , 4,6%
(2,8%



2 -

75,3±3,26

(2).

14,5 %

86,2±3,53

98,6±5,32

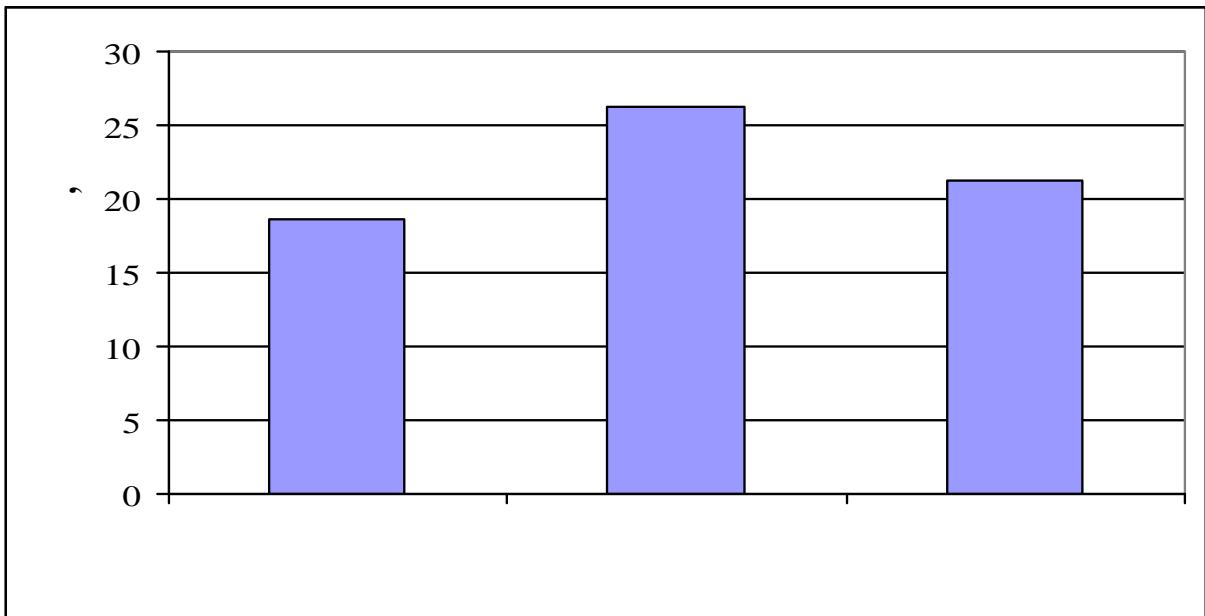
30,9%

18,6±0,23

(3).

14,5%

40,8%



3 -

12,36±0,54
0,3
/ , 106,2±1,24 /
, 9,21±0,73 /

1.
 2. // « » - 2007. - 1. - .45-47.
 3. // , , . - 2007. - 4. - .64-66.
 4. //
- 1.- .156-159. : , 2009. -
4. , , 2004. -495 .

RESUME

In the article, given the nonspecific gastroenteritis changes in clinical and physiological parameters in sheep of the Edilbaev breed such as body temperature, respiration rate and pulse rate, which are necessary in the production activity of the veterinarian. With the development of acute inflammatory condition from the gastrointestinal tract in sheep is accompanied by tachycardia and hyperpnea, erythrocytosis and mild lymphocytosis, with eosinophilia and monocytosis are also recorded.