
666.762.1

1
2

1
2
2

« »

8-1,9

80 %

250-300

[1-3].

[4-6].

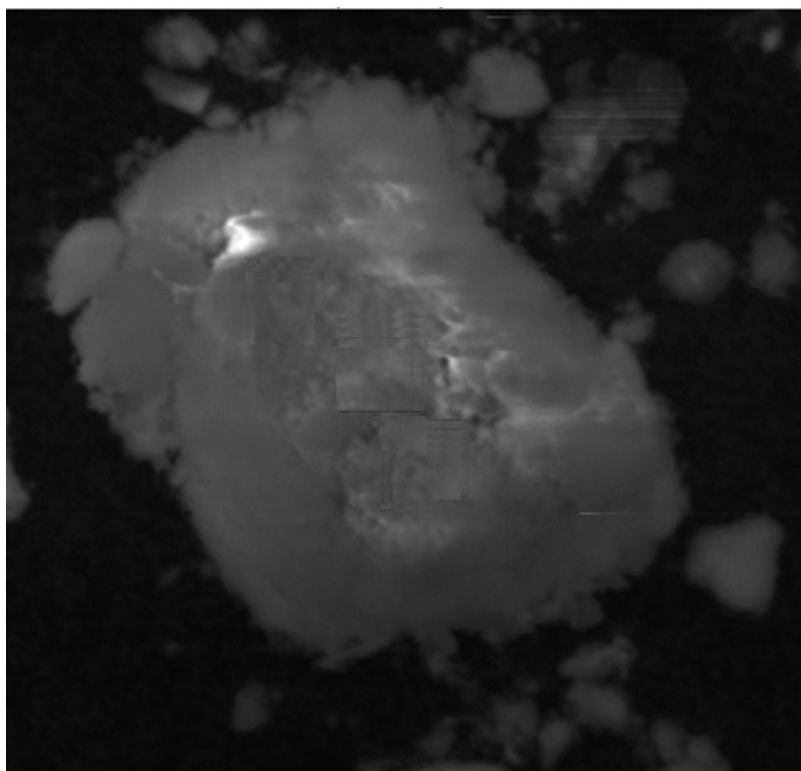
DIN EN 998-1.

[7-10].

550 / ³.
51,03 %.

83 %.

0,11 10,49 (1).



1 - -

pK_a^x.

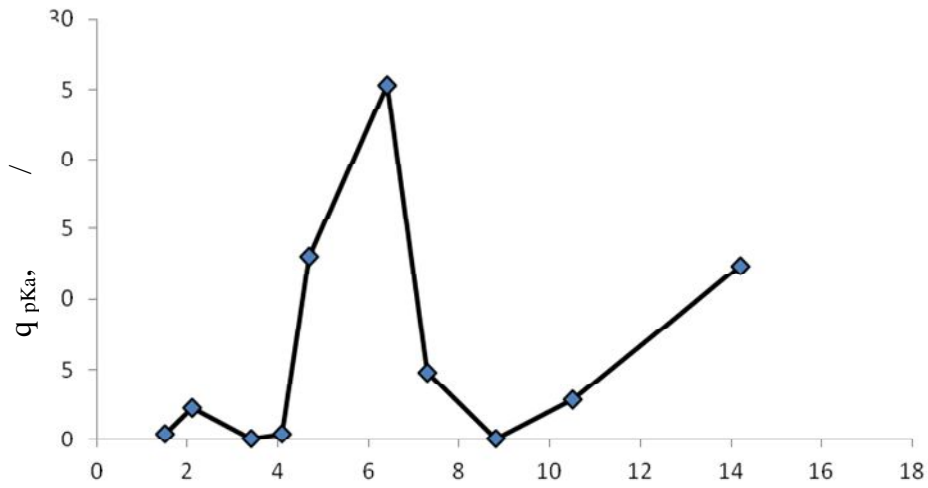
$$(q_{pKa^x}, - / - / ^2)$$

$$pK_a = +4.7, pK_a = +6.4.$$

$$\sum q_{pKa} = 53.72$$

$$\sum q_{pKa} = 7.70$$

(.2).



2 -

$$(pK_a < 7)$$

10 %

28

$$R = (2.71 \pm 0.108)$$

[11].

()

13,43,

10 % -

=13,31.

28

47,67 %, - 31,41 %.

10 %

10 %, . . .

1

1 -

	/ ³	700
10	/ ²	8,4
	%	98,3
	/(. . .)	0,18
		4,7
		0,38
		F35
	/(°C)	0,18
		12

28

$$R = (4,75 \pm 0,149) \quad , \quad 5 \%$$

VINNAPAS 8031H
Melflux 1641F

Mecellose FMC 2094.

1.
// . - 2000. - 9. - . 16-17.
2.
//
I , - 2002. - 11. - . 16-17.
3.
//
- 2015. - 3 - . 41-44.
4.
// . - 2001. - 4. - . 8-10.

5. // - 2005. - 9. - . 89-92.
6. // - 2011. - 1. - . 98-103.
7. Loganina V.I., Ryzhov A.D. Structure and properties of synthesized additive based on amorphous aluminosilicates // Case Studies in Construction Materials. - 2015. - . 132-136.
8. Loganina V.I., Ryzhov A.D. Properties of Limy Composites with the Addition Aluminosilicates // Contemporary Engineering Sciences. - 8. - 2015.- . 108-112.
9. // . - 2015. - 1(22). - . 58-61
10. - .: . , 1978. - 44 .
11. // . -2007. - 11. - . 94-97.

RESUME

The composition of a dry building mix designed as a heat-insulating decorative plaster walls of buildings was developed. The regularities of the structure of calcareous mixtures in the presence of an additive based on amorphous aluminosilicates have been established.

338.46

1. 1, ,

2. 1, ,

1 « » , .

2 , - - - - - ,